

Company Brochure



Heightsafe Systems Services Contents

Introduction to Heightsafe Systems

Page 3 - 8

Products

Install, Supply Only & Hire Services

Page 9 - 35

Compliance Services

Page 36 - 49

Maintenance Services

Page 50 - 61

Training Courses

Page 62 - 70



Welcome to Heightsafe Systems

Heightsafe Systems was born from the passion and vision of our managing director, Ken Diable, who brings a wealth of experience, knowledge, and marketing skills to deliver a service offering of the highest standard, one that surpasses that of competitors and shares this massive drive and passion with a growing group of highly professional and dedicated staff. Ken's aim is for Heightsafe to become the UK's leading independent 'Work at Height' company and we are well on our way.

We knew we had to approach the industry from a different angle, embracing all that technology has to offer and nurture a young fresh team that could drive the business with new initiatives and innovation.

Heightsafe Systems was formed in 2009 and started from a two man office. With sound advice and strong support partnerships we have continued to grow and recently relocated to a 15,000 sqft modern office and warehouse building to provide the space for our next planned expansion.

Our new facility is enabling further growth into new markets, development of our own SATRA tested and CE marked products, expansion of our Compliance division, a dedicated Building Fabric division, with the most exciting development being a 'Work at Height' training facility.

How Heightsafe stands out from the crowd...

- Providing clients clarity and honesty
- Ongoing Investment into staff, training, development and bespoke IT systems
- Real time reports using the latest technologies
- Array of highly recognised accreditations and the accolade of winning North West Business of the Year



A Personal Message from Ken Diable, Managing Director

"I was asked recently what drives me to keep pushing this business to new heights and dig deep for opportunities and innovation. There are two key factors (amongst others) clients and staff, both of whom are a pleasure to work with on a daily basis.

I would like to personally thank all of our clients for their ongoing support, without YOU we wouldn't have a business, and to our staff, your dedication and passion to deliver never fails to humble me.

Heightsafe Systems will project manage your Work at Height requirements, have the right people for the right job at the right time, to assess and manage your risk on site and focus on effective planning, problem solving and bespoke solutions, ensuring full compliance at all times"



Ken Diable
M.D & Founder

Our Values

L

LEADERS

"Always striving to bring the latest technology and best value to all clients, via a results driven approach."

E

EXCELLENCE

"In everything we do."

A

ADAPTABLE

"We can work to your processes and methods, applying our industry knowledge giving clients an individual and bespoke service that works for them."

D

DELIVERY

"Always delivering our client's needs above and beyond."

I

INNOVATION

"We always strive to push to the next level in service, people and technology."

N

NO GREY AREAS

"We give visibility and clarity to everything we do."

G

GREAT PEOPLE

"We invest heavily in our people and infrastructure, to ensure the best service for all clients."

Our Accreditations and Certifications



Clients we work with



SELFRIDGES & CO

safestore

CHRISTIE'S

Continental

citb



CITYWEST HOMES



HC
one of a kind



Jack Wills

Tilda
Legendary Rice



Lambert
Smith
Hampton

sodexo



Clients we work with



thomasinden



Sir Robert
McALPINE



Products

Install, Supply Only & Hire Services



Product Contents

11. Freestanding Weighted Guardrail
12. Fixed Guardrail
13. Collapsible & Folding Guardrail
14. Parapet Guardrail
15. Horizontal Safety Line & Lifeline Cable Systems
16. Composite Safety Line Systems
17. Concrete Deck Safety Line Systems
18. Safety Line (Standing Seam) Systems
19. Overhead Horizontal Track Systems
20. Mobile Man Anchor
21. Modular Access Ladders
22. Lightning & Surge Protection
23. Fall Arrest Ladder Systems
24. Plant Service Support
25. Solar PV Support Systems
26. Aluminium Access Walkway
27. GRP & Anti Slip Roof Access Walkway
28. Step Overs
29. Access Hatch & AOV's
30. Abseil Products
31. Eyebolts
32. Skylight Fall Prevention Solutions
33. Vehicle Rail Protection Systems
34. Tammet Barriers
35. Louvre Screens

Freestanding Weighted Guardrail

Our lightweight freestanding edge protection system uses a proven counterbalance design to achieve exceptional stability on all roof surfaces. As the system is completely freestanding there is no need for drilling or penetration of the roof covering.

The safety system is supplied in kit form using modular components which are quickly and easily linked together to form a sturdy, lightweight and durable free standing guardrail and fall protection system.

Our new guardrail is tested to the latest stringent British standard EN13374:2013

For Compliance after care see page 40

Our Free Standing Edge Protection System:

DURABLE - Pre-galvanised tube and stainless steel fixings

VERSATILE - Pre-assembled components to allow for quick and easy installation

LIGHTWEIGHT - Weighing just 15kg per LM the system is easy to lift and move

SIMPLE - System uses minimum number of components for easy installation

Available for :



Install



Supply



Hire

Finishes :



Powder coating to any RAL colour.



Hot dip galvanisation.

Extras

- Can connect to Ladder Systems.
- Can be bonded to Lightning Systems.

Key Components

Main Upright

- Height fully adjustable from 850mm up to 1350mm
- Removable top riser unit
- Stainless steel grub screws and clinch nuts for extra durability
- Pre-galvanised steel tube

Intermediate Upright

- Height fully adjustable from 850mm up to 1350mm
- Removable top riser unit
- Stainless steel grub screws and clinch nuts for extra durability
- Pre-galvanised steel tube

Heightsafe can develop bespoke systems for any roof type.

20kg weight

- 100% recycled PVC
- Easy to carry weighing just 20kg
- Will not damage roof surface

2.5 metre cross rails

- Pre-galvanised steel tube
- Freestanding handrails are pre-cut to 2.50m lengths
- Lightweight free standing roof guardrail

Spring loaded Gate (optional)

- Pre-galvanised steel tube

D-End or Wall Fix

- Pre-galvanised steel tube



Fixed Guardrail

Our fixed guardrail fits to various roof types and parapet walls to provide permanent fixed protection from falls.

Fixed guardrail is the ideal edge protection system for any roof type.

Product Options

Top Fix

Can be fixed on top of brick/concrete parapet roofs.

Side Fix

Can be fixed to the face of most roof parapet types and the side of either brick/concrete

Composite Fix (Metal deck)

Can be riveted to metal clad roofs, secured using 8mm bulb rivets.

For Compliance after care see page 40

Our fixed guardrail system complies to the following legislation:

- BS EN 13374: 2004 Class A
- HSE INDG 284 "Working on roofs"
- HSG33 "Health and safety at work"
- BS6399: Part 2 1995 Wind code

Our Fixed Edge Protection System:

DURABLE

Pre-galvanised tube and stainless steel fixings

VERSATILE

Pre-assembled components to allow for quick and easy installation

SIMPLE

System uses minimum number of components for easy installation

Key Components

Main Upright

- Height fully adjustable
- Removable top riser unit
- Stainless steel grub screws and clinch nuts for extra durability

Spring loaded Gate (optional)

- Pre-galvanised steel tube

2.5 metre cross rails

- Pre-galvanised steel tube
- Handrails are pre-cut to 2.50m lengths

D-End or Wall Fix

- Pre-galvanised steel tube

Available for :



Install

Supply

Finishes :



Powder Coating to any RAL Colour.



Hot dip galvanisation.

Fixing Type :



Concrete



Brick



Standing Seam



Trapezoidal



Collapsible & Folding Guardrail

Our folding edge protection system uses a proven counterbalance system and an ingenious folding bracket design to provide the perfect edge protection solution without compromising the aesthetics of the building.

The system is supplied in kit form using modular components which are quickly and easily linked together to form a sturdy, lightweight, and durable edge protection system.

Our folding system complies to the following legislation:

- BS EN 13374: 2004 Class A**
- HSE INDG 284 "Working on roofs"**
- HSG33 "Health and safety at work"**
- BS6399: Part 2 1995 Wind code**



Our Collapsible & Folding Edge Protection System is:

DURABLE

Pre-galvanised tube and stainless steel fixings

DISCREET

When not in use, it neatly folds down and cannot be seen from ground level.

SIMPLE

System uses minimum number of components for easy installation.

Available for :



Install Supply Hire

Finishes :



Powder Coating to any RAL Colour.



Hot Dip Galvanisation.

Key Components

Main Upright

- Height fully adjustable
- Removable top riser unit
- Stainless steel grub screws and clinch nuts for extra durability
- Pre-galvanised steel tube
- Available powder coated to any RAL Colour

2.5 metre cross rails

- Pre-galvanised steel tube
- Handrails are pre-cut to 2.50m lengths

20kg weight

- 100% recycled PVC
- Easy to carry weighing just 20kg
- Will not damage roof surface

For Compliance after care see page 40

Parapet Guardrail

The guardrail clamps to existing parapet, to meet Working at Height Regulations for Safety. Some people may think it is okay to work on a roof if you have a parapet; however this is only the case if your parapet is over 1m in height.

Our Parapet System is designed to be modular, and features adjustable clamps which fix onto either side of your wall.

**For Compliance after care
see page 40**

**Our parapet guardrail system
complies to the following legislation:**

- BS EN 13374: 2013 Class A**
- HSE INDG 284 "Working on roofs"**
- HSG33 "Health and safety at work"**
- BS6399: Part 2 1995 Wind code**

Key Components

Main Upright

- Height fully adjustable
- Removable top riser unit
- Stainless steel grub screws and clinch nuts for extra durability
- Pre-galvanised steel tube
- Available powder coated to any RAL Colour

2.5 metre cross rails

- Pre-galvanised steel tube
- Handrails are pre-cut to 2.50m lengths

Available for :



Install



Supply



Hire

Finishes :



Powder Coating to any RAL Colour.



Hot Dip Galvanisation.

**Why use scaffold if you're a roofer
carrying out roof overlay?**

Our Parapet Guardrail System:

DURABLE - Pre-galvanised tube

VERSATILE - Pre-assembled components to allow for quick and easy installation

SIMPLE - System uses minimum number of components

Horizontal Safety Line & Lifeline Cable Systems

Our flexible systems are designed to operate horizontally, vertically, around corners or up and down inclines. They offer complete protection and comply with all current legislation.

Heightsafe Systems' horizontal lifeline systems are a market leader in terms of their safety aspects, and ease of use. They complement individual building design and are sensitive towards planning requirements. Heightsafe Systems are a leading specialist in the design, supply, installation and commissioning of a number of horizontal cable based lifeline systems.

Each system is designed specific to the site requirements, whether that be a direct fix to a solid structure, composite metal roof sheets, single ply membrane roof profiles, concrete roofs and lead-lined roofs.

Based on an 8mm 7x7 stainless steel cable passing through intermediate cable guides and varying corner assemblies, the cable is terminated at either end using hex swaged fork-end or tensioner units connected to end anchorage assemblies.

**For Compliance after care
see page 39**



Composite Safety Line Systems

Designed for composite roof types, Heightsafe offer the metal deck safety line system. They are put in place using rivets which can be taken out if needing a temp system.

Product Options

- Can be a restraint system which only allows personnel to move the distance of the lanyard which is connected to the harness then the cable.

For example, the distance allowed would be 1.5m away from the roof edge so that they cannot physically go beyond the roof edge.

- Can be a fall arrest system which features a shock absorbing unit, fitted on either, both or one end of the safety line to protect both the worker and roof in the event of a slip.

- The bolts can be removed and the system can be used for a temporary basis.

Sizes

Composite panels comes in a range of sizes.

For Compliance after care see page 39

Available for :



Install

Finishes :



uPVC Coated



High-grade stainless steel

Attachable Roof Type :



Composite

Our Composite Safety Line System:

INTELLIGENT DESIGN

Roof anchor posts incorporate force minimisation technology, which limits the load transferred to the roof in the event of the system being used in anger.

DURABLE

Stainless steel components, providing superior levels of corrosion resistance, durability and service life.

VERSATILE

Can be installed anywhere on the roof to ensure the most practicable solutions are provided.



Heightsafe are now qualified as installers for Kingspan's 'SafePro2 fall protection system'.

- Compatible with most Kingspan insulated roof panels.

- Advanced fixing design allows efficient installation without the need to access the underside of the roof.

- Systems are fixed to the top skin only, with no penetration of the insulation, eliminating thermal bridging.

- Can be installed during or after construction.

Our composite safety line system is fully compliant with:

**-BS EN 795: C.
-BS EN 795: D.**

Concrete Deck Safety Line Systems

Designed for flat roof types, Heightsafe offer the concrete deck safety line system. For a concrete roof build up a traditional post or a concrete would be fitted using either expansion bolts or rod and resin dependant on whether you want a restraint or a fall arrest system.

Product Options

- Can be a restraint system which only allows personnel to move the distance of the lanyard which is connected to the harness then the cable. For example, the distance allowed would be 1.5m away from the roof edge so that they cannot physically go beyond the roof edge.
- Can be a fall arrest system if working beyond the roof edge
- Can be retrofitted which involves the removal of the existing roof covering in order to expose the concrete substrate. Once substrate is exposed posts can be secured and roof made water tight once again.

Sizes

Concrete deck posts come in varying heights and sizes depending on the build up of the roof sheet.

Available for :



Install

Finishes :



uPVC Coated



High-grade Stainless Steel

Attachable Roof Type :



Composite

For Compliance after care see page 39

Our Concrete Deck Safety Line System:

DURABLE

Stainless steel components, providing superior levels of corrosion resistance, durability and service life.

VERSATILE

Can be installed anywhere on the roof to ensure the most practicable solutions are provided.

Our concrete deck safety line system is fully compliant with :

-BS EN 795: D.

Safety Line Standing Seam Systems

Designed for standing seam roof types, Heightsafe offer the Standing Seam Safety Line System. Installed using S Clamps or S Blocks, (variation on the plate is dependent on the span of the up stand), making them useful for either permanent use or a temporary basis.

Product Options

- Can be a restraint system which only allows personnel to move the distance of the lanyard which is connected to the harness then the cable. For example, the distance allowed would be 1.5m away from the roof edge so that they cannot physically go beyond the roof edge.
- Can be a fall arrest system if working beyond the roof edge
- The clamps can be unclipped and the system can easily be used on a temporary basis

Available for :



Install

Finishes :



uPVC Coated



High-grade Stainless Steel

Attachable Roof Type :



Standing Seam

Our (Standing Seam) Safety Line System:

INTELLIGENT DESIGN

Roof anchor posts incorporate force minimisation technology, which limits the load transferred to the roof in a fall arrest event to less than 6kN.

DURABLE

High-grade stainless steel and aluminium components, providing superior levels of corrosion resistance, and service life.

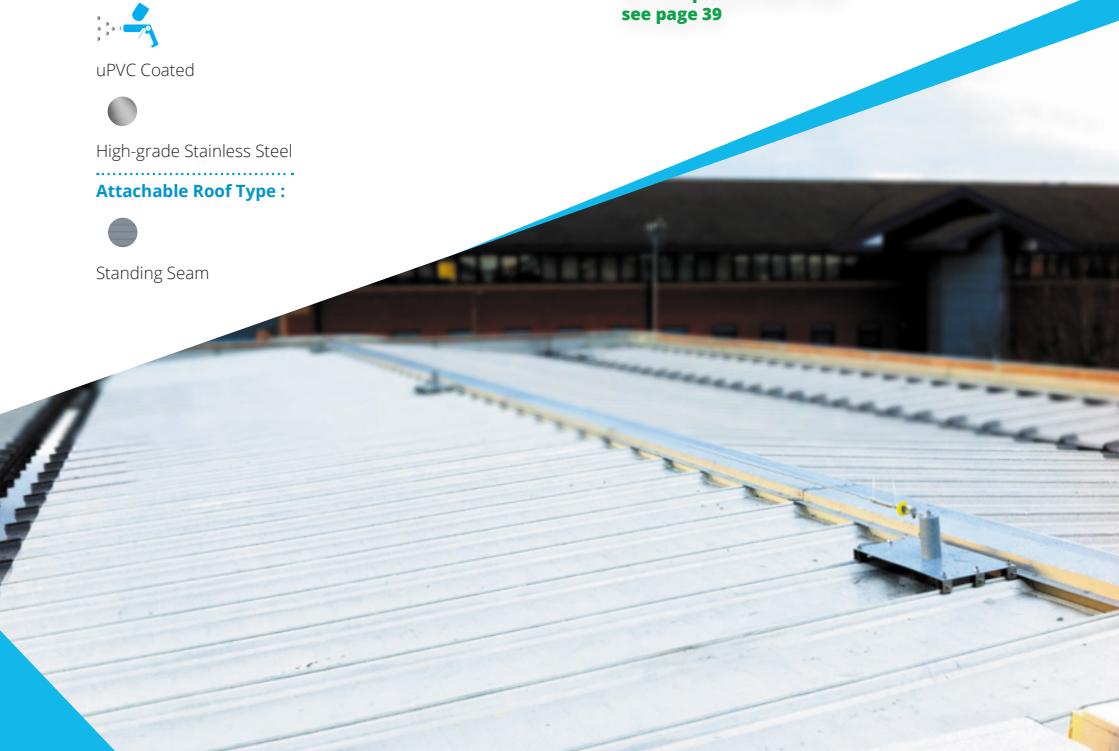
VERSATILE

Can be installed anywhere on the roof to ensure the most practicable solutions are provided.

Our standing seam safety line system is fully compliant with :

-BS EN 795: D.

For Compliance after care see page 39





System complies to:

- EN795 and CE marked.

Overhead Horizontal Track Systems

Overhead track systems are a horizontal track system that run above the user. They consist of a permanently installed rigid anchorage rail and free running anchorage connectors housed within the enclosed rail system. Overhead tracks can be adapted to suit the situation, designed to suit a range of fixing materials, and shaped layouts. Supporting up to 8 users with 12m of movement. Overhead track systems offer a safe solution to high level work areas that would be classed as high risk.

This system can be used within a fall arrest or a fall restraint environment, predominantly laid out in a fall restraint system to prevent a fall all together. They can be designed to meet the characteristics of any high working environment to minimise risk of fall.

Our Overhead Track System:

PROTECTIVE

Allows for maximum protection for those working in high risk areas.

VERSATILE

Can be configured for both standard fall restraint or optional full fall arrest protection.

DURABILITY

High-grade stainless steel or aluminium components, providing superior levels of corrosion resistance, durability and service life.

For Compliance after care see page 44

Finishes :



High-grade Stainless Steel

Attachable Roof Type :



Steel

Mobile Man Anchor

Mobile Man Anchors is a non penetrative solution to safe roof maintenance and access. Designed from a mixture of components including 20kg counterweights distributed evenly to support a fall arrest system for up to 2 people.

Mobile Man Anchors are moveable objects, being mobile allows this product to reach all areas of desired roofs on a variety of different roof types. Being modular it makes it portable and versatile allowing for quick and easy assemble.

Our Mobile Man Anchor System:

COST EFFECTIVE

DURABLE

Hot dip galvanised Steel Frame providing superior levels of corrosion resistance, and service life.

MODULAR

Can be split into several pieces for hassle free transportation.

Our Mobile Man Anchor is tested to the following legislation:

-Standard EN795. 1997 (Both Dry and Wet Conditions)

Available for :



Install



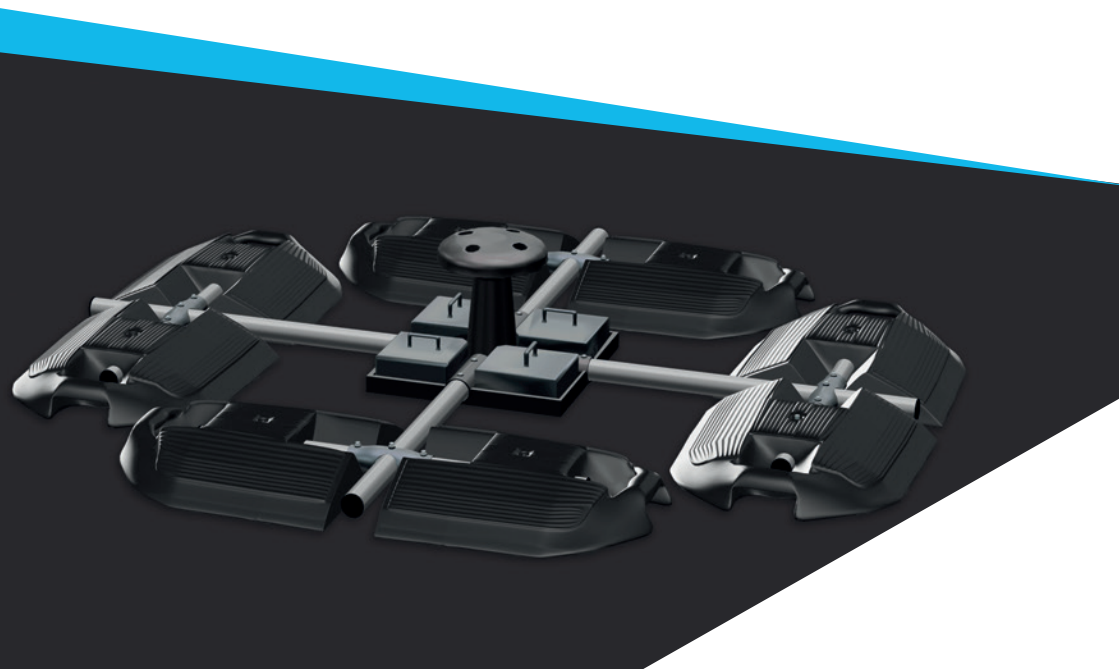
Supply



Hire

Heightsafe's Mobile Man Anchor can be used on all flat roof types.

For Compliance after care see page 43



Modular Vertical Access Ladders

Modular Vertical Access Ladders are composed of sections which make up a full sized ladder which is adjustable to meet height required.

Being modular means it is very user friendly and Adaptable. These systems come with a range of access options including hatch access, parapet crossing and walk through only.

They also have a number of additional components which help with a range of safety solutions to make a vertical access ladder appropriate for the job. Including Fall Arrest tracks, Rest Platforms and Lockable Ladder Security Plates.

Product Options

- All vertical ladders can be constructed with either a safety cage or, where a hoop arrangement is not suitable a fall arrest system can be fitted.
- Options can include a solid security panel fitted directly to the base of the ladder with a padlock facility or a removable lower ladder section to prevent unauthorised access
- Finishes can be altered to suit almost any specification with options available in steel, powder coated aluminium and glass fibre for complete corrosion resistance and no electrical conductivity
- Whatever your vertical access requirements, we can design and manufacture a safe, strong and high quality ladder system to meet your requirements

For Compliance after care see page 42

Our Permanent Access Ladders Systems:

FLEXIBILITY

Using different combinations of modular ladder components and number of hoops, any height of ladder can be produced to solve virtually all your access ladder issues

SIMPLICITY

No need for cranes or heavy lifting equipment, arrives on a standard pallet to be erected easily by two men, in modular form.

SECURITY

Once installed the combined ladder system is designed to be fully compliant to BS 4211

All the components that make up the system are designed to comply with:

- BS 4211: 2005
- BS EN 10025

Available for :



Install

Supply

Hire

Finishes :



Powder Coating to any RAL Colour.

Ladder systems come in a number of different materials.

- Hot Dip Galvanisation
- Aluminium
- Anodised Aluminium
- GRP
- Stainless Steel

Lightning & Surge Protection

The purpose of a lightning protection system is to divert extremely high levels of electrical current away from your building and safely into the earth. It is important to make sure that the correct level of lightning protection is installed to your building to assist this process.

Heightsafe are equipped to carry out a full risk assessment identifying the requirements for your building and then implement this in the form of designing and installing a lightning protection system to the latest British standard (BS EN 62305)

We install every element of your lightning protection system from the air termination system right down to your earth locations making the ground good upon our completion.

Part 4 of the current British standard considers the effect of lightning on your internal electronic and electrical devices. BS EN 62305 identifies surge protection as a compulsory element of your lightning protection system. Heightsafe are well-appointed to supply and install the necessary surge protection devices to protect your building in the event of a lightning strike.

**For Compliance after care
see page 49**

Our Lightning & Surge installation:

NATIONWIDE COVERAGE

FULL COMPLIANT WITH BRITISH STANDARD AS WELL AS OFFERING AN ALTERNATIVE EUROPEAN STANDARD SOLUTION

COMPETITIVE PRICES



Fall Arrest Ladder Systems

A fall arrest track system are fixed to ladders to eliminate risk of a falling. Fixed to the centre of a vertical access ladder this track system with a slip grip traveller & shock absorber lanyard as part of the PPE. Which you attach to then climb your ladder, and with every step you take it locks making it impossible to fall off.

The fall arrest rails come in 3m Lengths which have splice kits to make up any height, including top and bottom gates to close the system. This system should come standard with fall arrest personal protection equipment.

Product Options

Various options and materials are available depending on the environment in which the system is being installed.

Available for :



Install



Supply



Hire

Finishes :



Powder Coating to any RAL Colour.



Hot Dip Galvanisation.



Zinc

**For Compliance after care
see page 42**

Plant Service Support

Plant Support Systems are mainly used to support pipes and roof materials such as air conditioning units, air vents and solar PV's. Made from separate components using hot dipped galvanised steel, have the ability hold up against weathering and can be made to meet the characteristics of the job. With 3 different foot sizes and all fitted with rubber matts making them non penetrative, with the option for minimum to no weathering up. Built from separate components they are compact and easy to transport as well as being simple to fix & install.

Our Plant Service Supports are to the following legislation:

- **BS EN 10025**
- **Yield 280 N/mm2**
- **HDG BS EN ISO 1461**
- **BS 6946 EN Yield Stress 170/mm 21**
- **50 RHS steel box main support section BS EN 10025 S275**
- **41x41 slotted steel channel cross support section BS EN 10025**

Our Plant Support Systems:

ADAPTABLE

Our systems are fully adjustable, can be modified to suit changing requirements and supports all services independent of the roof structure.

EXTENSIVE SOLUTIONS

Heightsafe can develop bespoke systems for any support needs.

VERSATILE

Components to allow for quick and easy installation

Available for :



Install

Supply

Product Options

Support Feet

- AP Pivot Foot
(Ideal for large sloping roofs to arise and position plant work)
- BD Lightweight Support Foot
(Ideal for low cost installations when price is paramount, provides a strong lightweight foundation)
- LD Support Foot
(Smallest of the range, can take loadings up to 110kg)
- MD Support Foot
(Mid-range Support Foot, can take loadings up to 330kg)
- HD Support Foot
(Ideal for extra-large loads, can take loadings up to 450kg)
- SD Support Foot
(The largest of the range, can take up to loadings of either 600kg or 750kg)

Support Frames

- Low Level Support Frame
(Ideal for keeping equipment as low as possible to the roof level 100mm)
- Duct Support Frame
(Supports all sizes of duct work and cable trays)
- LD Support Frame
(Light duty, ideal for cable trays, small pipework and ducting)
- MD Support Frame
(Medium duty, extra support for larger ductwork or twin support of dual ducts, multiple cable trays or large pipe supports)
- HD Support Frame
(Medium/Heavy duty frame provides extra support for larger units)
- SD Support Frame
(Super heavy duty frames for very large units)





Solar Photovoltaic Support Systems

Heightsafe can now supply a unique universal frame specifically for the fitting of solar panels and frames to commercial roofs, whether they are new or retro-fit.

Solar PV Support Systems:

- Non - Penetrative or Fixed Solution.
- Can be ballasted at the optimum pitch and orientation without affecting the integrity of the roof.
- System can be ground mounted.

Using a top-fix technology, therefore avoiding fixing-back to the building structure, the universal post has a variety of fixing anchors to suit all commercial roofs and is compatible with:

- Roofs
- Composite panels & BUOS
- PVC membrane
- Bituminous membrane
- Standing seam
- Truss fix tiled roof

Available for :



Install



Supply



Aluminium Access Walkway

Aluminium walkway systems are composed of 100% recyclable aluminium. They offer a lightweight system and corrosion protection. At standard sizes this system comes modular but can be designed to meet bespoke designs.

Using a simple self aligning design this reduces installation time on site and overall time on the project. A non penetrative fixing system this eliminates roofs leaks and damage to the integrity of the roof, also transferring load to the structure. With a non slip tread design this allows for all weather access. Adjustable fixings allow for level fixing on slopes of up to 20 degrees.

There is additional extras that can be added to walkways systems such as 150mm high toe-board for added security. Handrails are another optional extra that can be added to a walkways system which can be to both sides or one side around the outer perimeter. Colour powder coating available allowing for freedom to match roof or make into separate feature.

Our Aluminium Access Walkway System:

- Non - Penetrative fixing system that eliminates Roof Leaks
- Simple self aligning design which reduces on site installation.
- Aluminium construction low weight & corrosion Free
- Optional 150 mm Toeboard upstand for full compliance with british standards.

For Compliance after care see page 45

Available for :



Install



Supply

Finishes :



Powder Coating to any RAL Colour.



Hot Dip Galvanisation.

Attachable Roof Type :



Concrete Deck



Timber



Felted



Metal



GRP & Anti Slip Roof Access Walkway

An anti slip walkway system is made up from either a glass reinforced plastic (GRP) or a Rubber.

They are non penetrative solutions to walking along a roof top without damaging the integrity of the roof and reducing the risk of falling.

Available for all different roof types, the anti slip walkway is a great solution for metal deck roofs where they are very slippery when barely wet.

Also being non fixed means its is moveable and can be used in different areas of a roof.

GRP & Anti Slip Roof Access Walkways System:

- Excellent corrosion resistance - GRP
- GRP- high strength to weight ratio
- GRP- electrically and thermally non conductive.
- Quick and easy to install Dukmat
- No fixing required.
- Protects roof membrane from being damaged, chipped, or worn.

**For Compliance after care
see page 45**

Available for :



Install Supply

Finishes :



Powder Coating to any RAL Colour.



Hot Dip Galvanisation.

Attachable Roof Type :



Concrete
Deck



Timber



Felted



Metal

Step Overs

Step over systems are used to give easy access up and over a raised level. Manufactured in hot dipped galvanised steel with non penetrative wide feet to spread the weight of the step over the unit and not damage the integrity of the roof by fixing to it.

As the system is not fixed the feet must have a wide spread to increase stability. M10 fixing bolts are used to fix components together and allow for fast and simple installation.

These systems are compliant with all relevant British standards for working at height regulations 2015.

Our Step Over Systems:

- Freestanding Non-Penetrative
- Quick and Simple on site assembly
- Flat packed for ease of transportation
- Health and safety regulation compliant
- Optional fully certified independent warranty
- Custom designs available

Available for :



Install



Supply



Hire

Finishes :



Powder Coating to any RAL Colour.



Hot Dip Galvanisation.

Attachable Roof Type :



Concrete Deck



Timber



Felted



Metal

For Compliance after care see page 45



Access Hatch & AOV's

Access Hatches and AOV's (Automatic Opening Vents) can come in a variety of sizes or be made to fit a bespoke design. With single or double leaf options being made from aluminium makes it very light, designed with the integrity to support a live load of 200kg per m².

All hatches have thermal lids and upstands which, in case of fire, is automatically released opening the hatch. All are powder coated white internally for a presentable finish.

Having gas spring assisted openings supported by heavy duty steel hinges makes for a strong, reliable and easy to access structure.

Can be fitted to all angled roofs with any type of roof type making them very adaptable to all jobs. For security the hatch comes with an external padlock-able handle.

Product Options

THERMALLY BROKEN ROOF HATCH

- Thermally Broken lid & frame
- Manufactured in Aluminium or stainless steel
- U-Value of 0.43 W/m²K
- Assisted Lift
- Curb Liner as standard
- Internally Powder Coated White (RAL 9010) as standard.
- External powder coating optional
- The hatch & lid is filled with 50mm CFC and HCFC free insulation.
- 300mm Standard Upstand, 200mm Optional
- Internal Pull Handle
- Sureclip FlashFast membrane fixing system
- Double unbroken seals
- Stainless Steel pintle hinges and all fixings
- Hold Open Stay

AOV SMOKE VENTS

- Sizes up to 3000 x 1800mm
- CE marked to EN12101-2
- Can be wired direct into the BMS or FAS system
- 50mm of CFC and HCFC free insulation
- Double unbroken seals
- Opens to 140 degrees in less than 60 seconds

Available accessories

Zip Ladders / Jakdor's / Safety Rails



Our Access Hatch & AOV Systems are tested to the following legislation:

- BS EN 12207:2000 Air Permeability (4.83m³/hour/m² at 600Pa)
- BS EN 12208:2000 Water Tightness Class 9A
- BS EN 12210:2000 Wind Resistance Class E2400
- BS EN 1991-1 Snow Load 1200Pa for 1 hour
- BS 8200 Impact Resistance Pass
- BS EN ISO 140 Acoustic 25dB
- BS EN 1627-1630 Security Pass

Available for :



Install Supply

Finishes :



Powder Coating to any RAL Colour.



Anodized aluminium



Both these options have been tested to European standards EN7951996.

Abseil Products

Abseiling is a key element of our industry, specifically for window cleaning and lower level gutter access.

There are a variety of products available:

Mushroom posts combine abseiling and mansafe into one system allowing for complete coverage whilst conducting cleaning to windows or gutters.

There are 4 holes evenly distributed around the top of the post allowing users to latch on using Karabiners and then safely descend from the building. Made from stainless steel, they can take the weight of two users. Furthermore the posts can be adapted into a safety line system making it a multi-purpose and cost effective product. Spaced closer together than your typical Safety Line system, they require more posts, but allow for fall arrest or fall restraint.

A Davit Arm and Base are coupled together to provide a fixed abseil point. The arm is removable allowing it to be attached to any posts existing on the roof. They are easily manoeuvrable with a range of 360 degrees and the option to adjust the arm's angle to the extent of 110 degrees. Arm length can also be altered.

Davit Arm & Base

- Adjustable arm to increase length and reach to access raised edges without putting pressure on parapet or obstructing material.
- Adjustable angle allowing up to 110 Degrees of movement
- Composed of aluminium tubing to make for most protection from the elements.
- Lightweight and manoeuvrable making it easy for one user to move and use.
- Unique system requires one arm for as many bases as required.

Mushroom Posts

- Unique system allowing for abseil and can be used within a safety line system.
- Complete stainless steel for integrity

For Compliance after care see page 41

Available for :



Install



Eyebolts

Eyebolts are our most common product for window cleaning and abseiling when in a pair.

Eyebolts are galvanised, stainless or powder coated steel hoops which are fixed to a range of surfaces. They can be fixed to brick, concrete, steel or cavity walls.

They come standard in a steel finish but can be powder coated on request. Individually tested to 12kN, Heightsafe will supply, install and certify this product.

**For Compliance after care
see page 41**

All eyebolts are installed and tested to the recommendations set out in BS Code of Practice ISO 9001:200.

All eyebolts, with the exception of abseil point eyebolts, are required to be compliance tested every 12 months via a pull tester to 6kn for 30 seconds.

Abseil point eyebolts are to be tested every 6 months due to the nature of their usage



Skylight Fall Prevention Solutions

Skylight protection is available in two forms; removable and fixed. They are designed to protect skylights and rooflights in the event of debris hitting the glass. Depending on the project requirements they can be adapted to meet demands of the job.

Fixed skylight protection is made up of 1" x 1" pitch x 3.0mm wire mesh overlaid on to a 8.00mm diameter round bar frame. Predominantly they are fixed to the crowns of a metal clad roof with L Shaped Lugs.

Skylight protection is designed using a guardrail system which surrounds the perimeter of the rooflight. With specially designed corner weights the system is then locked into place providing ultimate protection to the rooflight.

Product Options

- Lightweight protection against falling debris
- Galvanised steel mesh
- Support frame takes load - no pressure on skylights

Freestanding

- Fully modular system making it easy and quick to Assemble.
- Simple and reliable fall protection system
- Fits square and rectangular skylights, roof lights and domelight
- L shaped weights to surround the entire skylight keeping the system locked together

Available for :



Install



Supply

Our Skylight Fall Prevention Solutions are tested to the following legislation:

- BS EN 12975-1
- BS EN 12976-2
- BS EN ISO 22975-1
- BS EN ISO 22975-2



Vehicle Rail Protection Systems

A vehicle rail system is designed to offer a safe solution to working on the back of a truck or flatbed. Offering a fall prevention off the back of a vehicle this will ensure legal compliance and a safe working environment. Designed to be fitted with no tools and to be assembled at ground level, there is minimal risk to the installer and the user.

This modular system is adaptable to many different sized trailers and can be relocated with ease. Composed of a galvanised steel powder coating, it is also protected from corrosion and weathering.

Our Vehicle Rail Protection Systems:

- No tools required for installation
- Entire system ground assembled with zero exposure to risk
- Ladder or stair access
- Minimal infringement on load-bed
- Modular design allows a combination of simple post and rail system or walk around platform system as required

Available for :



Install



Supply



Hire

Finishes :



Powder Coating to any RAL Colour.

Leading Edge Barriers

The leading edge barrier is both extremely robust and lightweight. Each welding point withstands a load of up to 500 kg.

The steel barrier replaces the classic 3-part edge protection as it is a handrail, toe-board and barrier combined. Being light weight of less than 20 kg it is a versatile and quickly mountable system. It is adjustable in height and offers protection with its double edges.

Our Leading edge barriers:

- Lightweight - Less the 20kg per panel
- Withstands loads of up to 500kg
- 3 part edge protection, barrier, handrail and toeboard
- Manufactured from high quality steel. Coated in a range of colours

Available for :



Install



Supply



Hire

Finishes :



Powder coating to any RAL colour.

Louvre Screens

Our Louvre screens are made from aluminium, mild steel or stainless steel with a galvanised steel support framework. Mainly used to cover ventilation material on roofs, Louvre screens are specially designed to be breathable but still have maximum security from rain and destructible weather conditions. With a wide range of finishes and coatings and shapes louvre screens can be designed to suit your needs.

There is also other factors that need to be assessed like insect meshes and bird guards. Acoustic Louvre screens are designed to control noise, and are a way of making plant material on the roof secure and further-defending them from the elements.

Our Louvre Screens:

- High resistance to rain ingress for enhanced weather protection.
- Manufactured from corrosion-resistant materials
- Available in a wide range of options -shapes, configurations, materials, finishes and coatings - to meet the requirements of almost any project needs.
- If noise reduction is required, Acoustic Louvre panels may be used.
- Freestanding or fixed installation

Available for :



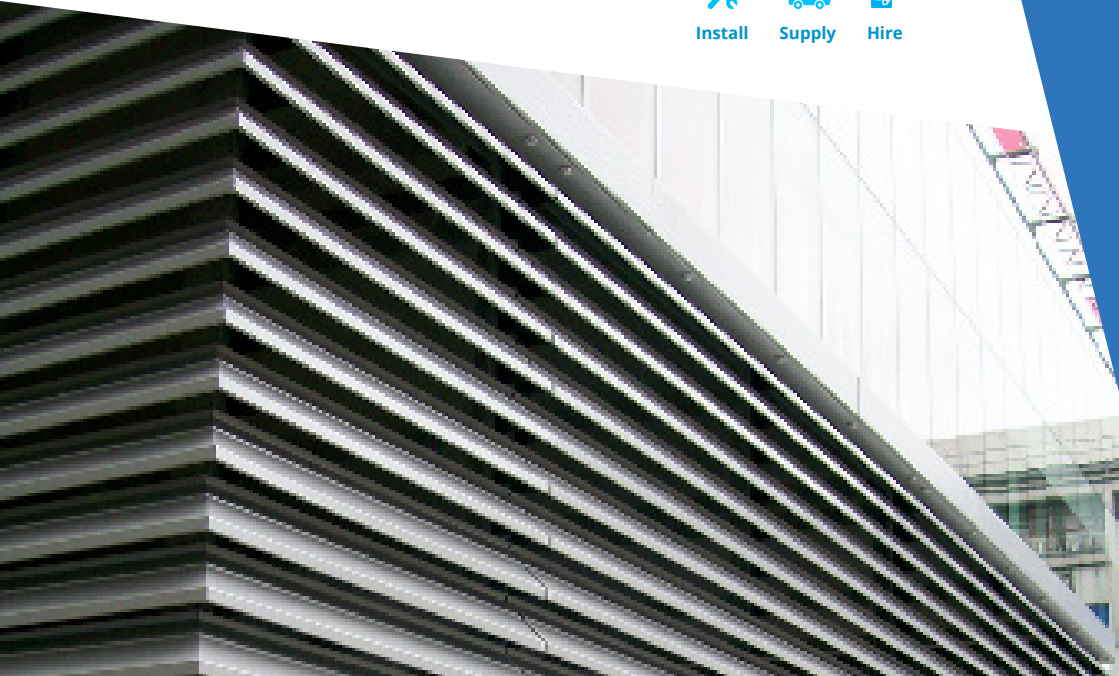
Install



Supply



Hire



Compliance Services



Compliance Contents

- 38. Safety Line Testing and Maintenance
- 39. Guardrail Edge Protection Testing and Maintenance
- 40. Eyebolt Testing and Maintenance
- 41. Access Ladders Testing and Maintenance
- 42. Mobile Man Anchor Testing and Maintenance
- 43. PPE Kit Testing and Maintenance
- 44. Walkways Testing and Maintenance
- 45. Dry Riser Testing and Maintenance
- 46. Gutter Cleaning
- 47. Festive Light & Chandelier Anchorage Testing
- 48. Lightning & Surge Protection Installation
- 49. Flagpole Testing

Safety Line Testing and Maintenance

Safety lines are legally required to be inspected, swage tested and certified at least every 12 months. There are many reasons why safety line systems may not be compliant and fit for the purposes they were installed for. The weather can have big impact on the stability of these systems, i.e. excessive snow will force the cables to slacken, and foliage growing around any part of the systems may prevent the traveller running freely.

Heightsafe, install, inspect and certify the following types of safety line systems, Product Options

- Overhead systems
- Horizontal systems
- Vertical systems
- Track systems
- Internal systems

It is a legal requirement to create and ensure a safe environment for personnel working at height.

Without a tested and certified installed system, you can be held responsible for an accident or fall.

With years of experience in cable system testing, Heightsafe will ensure that your building meets all legal requirements and provide you with a stress free service by combining all your Work at Height requirements, saving you money and alerting you when your safety line system is due to be tested, ensuring you always remain compliant.

Service Benefits

- Heightsafe provide clients with access to reports, certificates, images, and vital roof access details via our online portal accessible 24/7.
- Automated reminders 1 month prior to testing.
- All tested equipment tagged as fit for use.

It is vital to check the associated Personal Protection Equipment (PPE) for each safety line to ensure each piece of equipment meets the manufacturer's recommendations and standards.

All safety lines are tested in accordance with EN795 Class C

Guardrail Edge Protection Testing and Maintenance

Guardrail should be inspected at least every 12 months. There are many reasons why guardrails may not be compliant, and may not provide the collective protection they were intended to provide. The weather can have a big impact on the stability of guardrail systems, i.e. excessive high winds and snow may cause the rails to move and become detached at points. Foliage can also cause guardrail to become unstable.

It is recommended to have Guardrail Edge Protection visually inspected and certified every 12 months.



Heightsafe, install, inspect and certify the following types of guardrail edge protection systems:

- Fixed
- Freestanding
- Parapet
- Collapsible
- Rivet fix
- Rail fixed to metal deck roofs

What to look for:

- Movement from the original installation location
- Damage to critical components and counterbalance weights
- Loose or missing components, fixing bolts, grub screws etc.
- Vandalism

Heightsafe will tag the guardrail and provide you with a certificate of inspection for your records and contact you a month prior to your next inspection due date.

This will guarantee your system always remains safe and fit for use. Should you require any repairs, Heightsafe will provide you with a report explaining any urgent repairs or recommendations.



Eyebolt Testing and Maintenance

Heightsafe operatives are competent and qualified in the installation and compliance testing of a variety of eyebolts.

They are widely used by many, including window cleaners and maintenance workers. There are many different types of eyebolts used for various reasons including safety eyebolts, fixing an object to a structure, visual merchandising hooks for shop displays, and window cleaning.

Heightsafe installs, tests and certifies the following:

- Fixed eyebolts
- Abseil points
- Flush keelock type
- Removable
- Visual merchandising hooks- Fixed eyebolts
- Anchor Points

What to look for:

- Loose/missing fixtures and fittings
- Vandalism
- Missing tags
- Structural damage surrounding eyebolt

All eyebolts are installed and tested to the recommendations set out in BS Code of Practice BS 7985:2002 conforming to BS EN795.

All eyebolts, with the exception of abseil point eyebolts, are required to be compliance tested every 12 months via a pull tester to 6kn for 30 seconds. Abseil point eyebolts are to be tested every 6 months due to the nature of their usage

Service Benefits

- All operatives are Work at Height Specialists who have years of experience in eyebolt installation and maintenance
- Before and after images are provided.
- All eyebolts are fitted with a Heightsafe compliance tag to show that the eyebolts have been tested and are fully compliant
- All clients have access to our online tracking tool which fires alerts to you and us a month prior to your eyebolts requiring retesting, ensuring you always remain compliant
- You will receive a compliance certificate for your own records
- Our operatives can not only install and test your eyebolts, but can also carry out any maintenance work should you require it.

Access Ladders Testing and Maintenance

Ladders come in all shapes and sizes. With the new 'Work at Height' regulations being introduced, access ladders have often been forgotten in terms of being compliant tested & certified.

It is a legal requirement to have all access ladders visually inspected and certified every 12 months to BS 4211:2005.

Heightsafe Systems installs, tests and certifies the following:

- Vertical access ladders
- Fall arrest ladders
- Fall arrest ladder tracks
- Ladder ties
- Hooped ladders
- Ships ladders
- Resting platforms
- Security gates/ fire escape stairs

It is vital that all of the above are tested annually and meet the requirements of the original manufacturer to ensure they are in good working condition and safe to use.

It is the responsibility of the management company or property manager to ensure ladders, ladder tracks and ladder ties remain compliant.

What to look for:

- Loose fittings/fixtures
- Ladder tracks not running freely
- Snapped ladder ties
- Corrosion
- Bent or dented ladders

Heightsafe will take before and after images, tag your ladder systems to show they have been tested and also provide you with a compliance certificate, as well as notifying you a month prior to the due date of your next test.

Defect reports are provided when necessary with recommendations.

Heightsafe can provide a comprehensive ladder register for sites with multiple equipment.



Mobile Man Anchor Testing and Maintenance

Sometimes it is not possible to have permanently fixed edge protection. Mobile man anchors can offer an equally safe alternative which are compact, cost effective, portable and easy to assemble.

The mobile Man Anchor is tested to standard EN795.1997 by our fully competent Work at Height Specialists who will supply, install, inspect and certify your equipment and associated PPE to ensure the highest level of safety and compliance.

Mobile man anchors are a convenient form of fall arrest equipment, offering you the freedom to move around easily and effectively by having an approximate radius of 1.5m.

It is vital to have your system tested annually to guarantee the equipment is fit for use, especially in case of an emergency.

By not having your equipment tested, you are putting yourself and others at risk.

What to look for:

- Any loose fittings/fixtures
- Dents or distortion
- Any signs of pulling on shock absorber
- Corrosion/cracks
- Missing/worn rubber boots

Heightsafe will take before and after images, tag your Mobile Man Anchor to show they have been tested and also provide you with a compliance certificate, as well as notifying you a month prior to the due date of your next test.

Service Benefits

- We can combine all your fall protection and roof maintenance needs to save you money and the headache of having to employ different contractors.

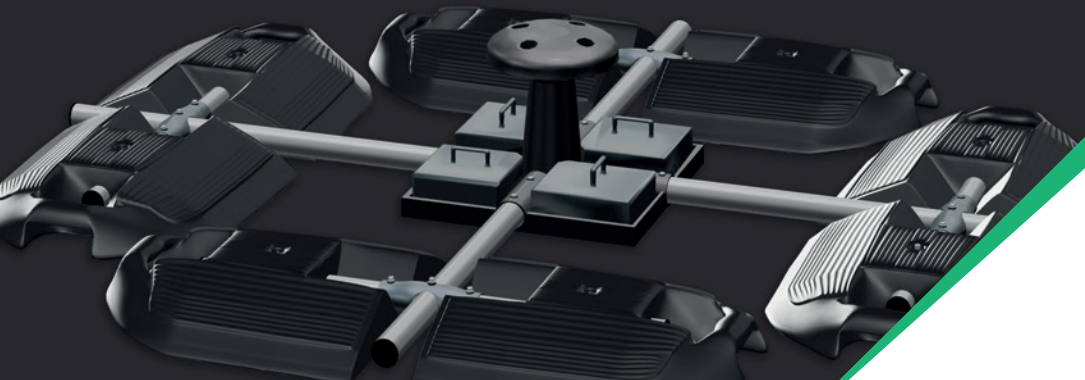
- All our operatives are Work at Height Specialists

- Before and after images will be collated

- You will have access to our online tracking tool which alerts yourself and us when your compliance testing is due, ensuring you always remain compliant

- Certificates will be provided showing your system has been tested

- We offer extremely competitive maintenance & testing contract, offering further discount to combine any other Work at Height requirements



PPE Kit Testing and Maintenance

All PPE is tested to BS EN 365:2004.

Protective equipment should ideally be visually inspected every 6 months, and fully inspected and certified every 12 months, remembering that each piece of PPE has a life span, and its own unique identifier.

Once out of their life span, PPE needs to be replaced to ensure anybody using the equipment remains safe. A PPE register should be in place for all equipment, and readily available for any operative to inspect.

Heightsafe inspect, test and certify all manufacturers PPE kit including inertia reels, fall arrest blocks, harnesses and lanyards, davits, winches, stretchers and rescue equipment, and can manage your fall arrest assets for you.

Heightsafe operatives will inspect all your PPE when testing your safety line systems and can supply you with a relevant PPE kit should you need one.

We will then provide you with a certificate for all compliant PPE as well as the safety line systems.

This is potentially life saving equipment and the condition of each and every component should not be underestimated.

Apart from the legal requirement to have documented evidence of PPE compliance, we recommend that all PPE kit is visually inspected looking out for any signs of the following:

What to look for:

- Tears and cuts to webbing
- Excessive wear of webbing or any other parts
- Weakening of load bearing parts
- Broken stitching
- Ensure PPE kit is clean, as dangers may exist under excessive dirt
- Heat or chemical damage
- Rusting or damage to fastenings and buckles

Heightsafe will not only inspect your PPE but also offer you guidance on what PPE is most suitable for your system and will supply you with the correct PPE.





Walkways Testing and Maintenance

Walking on a roof can be extremely dangerous, not only due to the nature of being on a high roof, but for many reasons including the effects of bad weather conditions, dirt or grime build up.

Walkway systems offer a more stable and secure means of access on a roof and can also come with handrails and toeboards for that extra, anti-slip safety.

Roof walkway systems can also have many different functions providing safe access to potentially hazardous areas. It is vital to have your walkway system inspected every 12 months to EN 516 to remain compliant and safe.

What to look for:

- Accidental damage
- Build-up of dirt & debris
- Loose fixtures/fittings
- Vandalism
- Corrosion
- Weather damage

Our operatives will inspect all walkway systems for all of the above, and if necessary, will clean the walkway with the appropriate cleaning attire to remove any sedimentary deposits which may have an effect of the usage and safety of the walkway.

Heightsafe will help keep your system compliant by notifying you a month prior to the retest due date, provide you with a compliance certificate, take before and after images, contact you if any repairs are required and offer you recommendations on where you may be able to increase the safety on your roof.



Dry Riser Testing and Maintenance

Heightsafe have fully competent operatives who can carry out certified dry riser testing and maintenance in accordance with the BS 9990:2006.

It is the property owner or managing agent who is responsible for the testing of dry risers. According to the BS 9990:2006, they require a full service annually as well as a 6 monthly visual inspection to ensure they are always ready if needed in an emergency. Dry Risers are tested to 10 Bar pressure for 15 minutes.

The importance of dry risers is vital. They provide a considerable amount of water to help prevent a fire spreading throughout a high rise building over 18 metres above ground level. Dry risers can often be neglected and vandalised, which is not always visible without a thorough inspection. Therefore, if the equipment is not visually inspected every 6 months or fully serviced annually, there can be serious consequences;

- Death or serious injury
- Loss of business
- Loss of wages
- Crucial data
- Structural damage
- Loss of personal belongings
- And many more...

If dry risers are not inspected every 6 months or serviced annually, you could invalidate your insurance.

Should a fire occur and your equipment has not been inspected, it will be you who is held responsible.

Heightsafe are different to our competitors. Our aim is to provide you with the best possible service and extra organisational tools to ensure your systems remain compliant and reducing the risks above. In order to do this, we provide a variety of services;

Service Benefits

- Having fully qualified and competent technicians to carry out the Dry Riser testing and maintenance
- Providing 6 monthly inspections and annual servicing certificates
- Images taken before and after any work is carried out
- Combining your Dry Riser testing with any Work at Height requirements you may have, saving you money and the hassle of dealing with different contractors
- Giving you access to your own personal online tracking tool which alerts yourself and us a month before your testing is due, ensuring it is never missed and you are always fully compliant

Gutter Cleaning

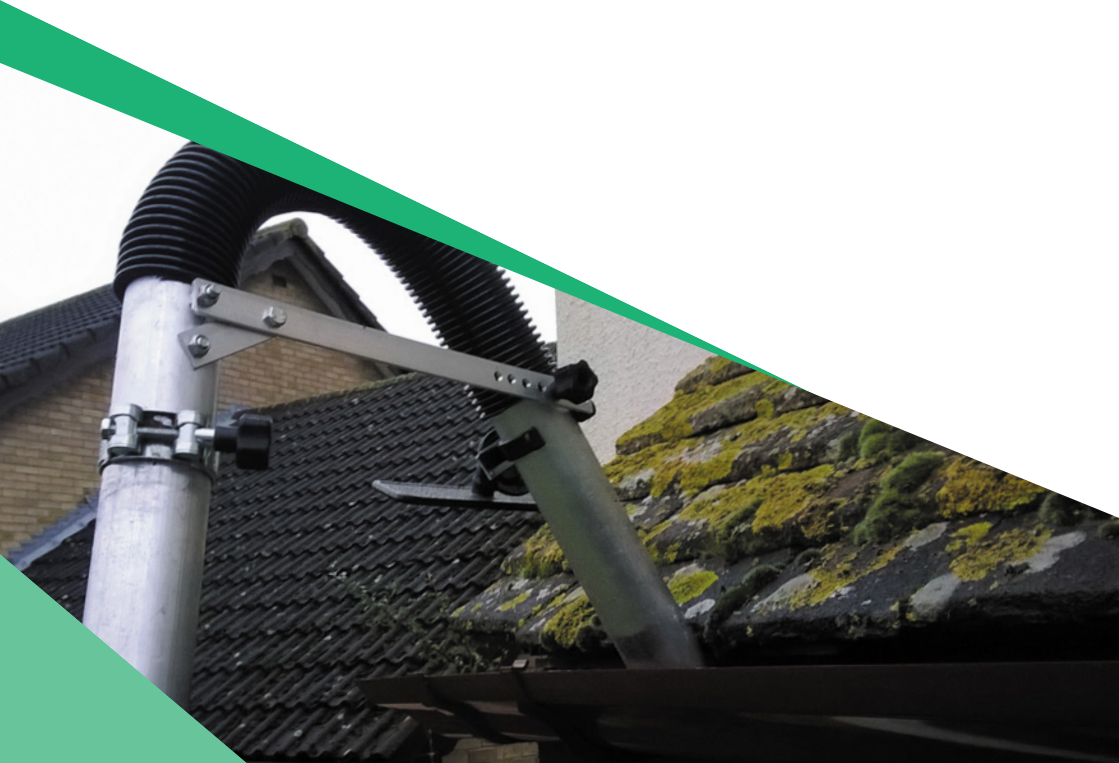
Heightsafe can also offer planned roof maintenance contracts, and undertake cleaning, maintenance and repair of industrial, commercial and retail roofs and gutters throughout the country. We provide an economical and efficient solution which when carried out at the time of installation and/or annual re-testing of fall arrest equipment, is saving our clients substantial time and money, having the solution with one provider, and only one annual contract.

Service Benefits

- Planned maintenance contracts by Working at Height Specialists
- Gutter Repair & Maintenance
- General Roof Maintenance
- Method Statements & Risk Assessments
- Practical on-site problem solving

Heightsafe employ carefully selected, trained and experienced operatives, who have a variety of skills and expertise. This allows us to deliver what everyone wants, value for money solutions to Working at Height issues. We pride ourselves in delivering these solutions professionally, efficiently and most of all safely.

Heightsafe are experts in the provision of dedicated re-active maintenance, allowing our experienced teams to quickly assess issues and carry out the cleaning/repair required. We provide an economical and efficient solution which when carried out at the time of Installation and/or annual Re-testing of fall arrest equipment, is saving our Clients substantial time and money, having the solution with one provider, and only one annual contract.





Festive Light & Chandelier Anchorage Testing

Festive Light Anchorage Testing

Apart from the many Work at Height solutions Heightsafe can provide, we also install, retest and certify anchorage systems and support brackets, for the suspension of cross street and building mounted festive lighting.

We currently work with a number of local authorities around the UK, prior to any festive lighting being implemented.

We maintain records, photographic evidence, and provide certification, and also our unique tracking software will alert you automatically a month prior to the current retest expiring, ensuring that your anchor points are always commissioned.

Chandelier Testing

Chandeliers fitted in ballrooms, dining rooms, restaurants and hotel foyers can add the wow factor to any establishment but it is important to ensure that regular thorough inspections are carried out.

All load testing and thorough examinations are undertaken to ensure that you comply with all requirements set out by the current LOLER and PUWER 1998 legislations.

Inspections should be carried out annually and Heightsafe's online tracking tool is used to alert our team to the due date of your inspection making sure you always remain compliant.

Our operatives are also trained to clean your chandeliers whilst on site carrying out your inspection ensuring that legislation is adhered to as well as restoring your chandeliers sparkle.

Lightning & Surge Protection

Lightning strikes can cause damage to buildings, their contents and people. The damage incurred can be in the form of a fire, structural damage or result in the failure of internal systems such as fire alarms etc.

It is important to carry out regular testing of your lightning protection system to ensure that it is in full working order and offering full protection of your building in the event of a strike.

The Electricity at Work regulations stipulate that systems should be tested at least once every 12 months in order to safeguard your building. However, it is recommended that the test be carried out every 11 months in order to allow for any seasonal variations in the system.

Regular maintenance of your lightning protection system means that any damage incurred can be identified and rectified immediately thus future proofing the system and reducing the likelihood of future damage.

Surge electrical protection. This offers assistance in protecting the internal systems within your building such as fire alarms, sprinkler systems, CCTV, IT equipment, lighting etc.

Both Lightning Protection and Surge Protection are detailed in the current BS EN 62305 regulation and Heightsafe will be more than happy to assist you in your efforts to protect your building and prevent loss of life.

Service Benefits:

- Upon completion of your lightning protection retest Heightsafe will issue you with a certificate of compliance, a remedial report and a drawing identifying the location of your system.

- A full transparent service is offered and your report will be given to you in both a detailed and clear format

- We have office and site staff on hand to discuss your lightning protection and surge requirements.



Flagpole Testing

A poorly maintained flagpole can be both aesthetically displeasing and of course a health and safety hazard and expensive to repair so it is important that regular inspections of either 6 monthly or 12 monthly intervals are carried out.

Our visits include the inspection of the flags, poles, halyard, pulleys and holding down bolts with report and images to support our findings upon completion of the work.

Should your flagpoles pass their annual inspection you will be issued with a certificate.

Heightsafe Systems offer flagpole testing services to many different sectors including schools, shopping centres, commercial buildings, councils and many more.

Service Benefits

- The images and certificates will be uploaded to our online tracking tool.
- As a client of Heightsafe Systems you will be issued with log in details whereby you can access all of your information at your pleasure.
- Discounts will be applied for multi-site clients



Maintenance Services



Maintenance Contents

The background of the page is a warm orange color, split diagonally from the top right to the bottom left. On the left side, there is a faint, semi-transparent silhouette of a person standing on a roof, using a long-handled tool, possibly a roof scraper or shovel. The person is facing right, and the tool is held vertically. The roof surface is visible as a series of parallel lines.

52. Gutter Maintenance

53. Gutter Lining and Repair

54. High Level Cleaning

55. Rooflight Replacement

56. Thermal Roof Survey

57. Soffit and Rainwater Goods

58. Graffiti Removal

59. Solar PV Panels & Thermal

60. Roof Maintenance and Repair



Gutter Maintenance

Heightsafe Systems can also offer Planned Roof and Gutter Maintenance contracts, and undertake cleaning, maintenance and repair of industrial, commercial and retail roofs and gutters throughout the UK.

We provide economical and efficient solutions which when carried out at the time of Installation and/or annual Re-testing of fall arrest equipment, saved our clients substantial time and money, having the solution with one provider, and only one annual contract.

- Planned Maintenance Contracts by Working at Height Specialists
- Gutter Repair & Maintenance
- General Roof Maintenance
- Method Statements & Risk Assessments
- Practical on-site problem solving

Heightsafe Systems employ carefully selected, trained and experienced operatives.

This allows us to deliver what's important to clients, value for money solutions to Working at Height issues. We pride ourselves in delivering these solutions professionally, efficiently and most of all safely.

Heightsafe Systems are experts in the provision of dedicated re-active and planned maintenance, rapid assessment of issues and timely repairs.

We provide an economical and efficient solution which when carried out at the time of Installation and/or annual Re-testing of fall arrest equipment, is saving our Clients substantial time and money, having the solution with one provider, and only one annual contract.

Our Gutter Maintenance Service Offers:

- Two man work at height qualified teams.
- Latest equipment to minimise risk & inconvenience.
- Before & After images.
- Reports available in real time via bespoke client portal.

Fully qualified building maintenance team, committed to providing a high quality professional service within time scale & budget.

Gutter Lining and Repair

Heightsafe Systems are proud to be Approved Installers of the exclusively manufactured Plygene Gutter line system, amongst other products.

The material used for repairs are incredibly hard wearing and as such carry a 20 year guarantee. Pliable enough to mould to any gutter profile, but more importantly will tolerate changes in temperatures and potential building movement, without splitting or cracking.

This unique system creates a totally sealed, fully waterproof 'gutter within a gutter' leaving the original gutter untouched so there is no need for any structural work.



Gutter Lining & Repair Services:

- **20 Year gutter lining guarantee using high performance membranes.**
- **Flexible, strong and environmentally friendly.**
- **Fully stocked vans with accessories to make on site repairs.**

Plygene Gutterline® is the only BBA approved system to stop gutters leaking, for good. It can be used on all sizes and types of buildings, from old industrial mills to modern shopping malls, on all kinds of roof and for any gutter profile.

Because this product is made to measure for every project, a perfect fit is guaranteed and it stops gutters leaking, for good. Even gutters over four metres wide and in excess of 200 metres in length have been successfully lined with a single installation.

Gutterline is equally effective on north light roofs with lots of valley gutters as it is on perimeter and boundary gutters. And it works with any original gutter structure, whether it is cast iron, asbestos, concrete, timber or modern fibre materials.

As with all work Heightsafe Systems undertake, full Working at Height regulations are followed, and we can often carry out a combination of high level works at the same time to save our Clients money.

A worker in a blue uniform and red helmet is performing high level cleaning on a building facade. The worker is wearing a safety harness and is using a high-pressure water spray. The background shows a large, curved structure, possibly a dome or a large window, with a bright light source behind it.

High Level Cleaning

Heightsafe Systems specialise in all aspects of commercial and industrial high level cleaning, working to provide cost effective, efficient solutions, using the latest technology and equipment, to include structures such as the below:

- Canopies
- Glass Roofs and Atriums
- Skylights
- Signage & Cladding
- Building Facades
- Bridges and Roof areas

We work effectively and efficiently to offer realistic and competitive costs, using the very latest equipment and access techniques. As a Health & Safety Consultancy and with our teams all Work at Height qualified, we will undertake specific H & S risk assessments prior to undertaking any High Level cleaning project.

Our operatives are also fully trained and qualified to operate an extensive range of access platforms, from specialist spider type machines to large truck mounted access platforms and MEWPS, paying particular attention to the health and safety of occupants and general public.

By utilising a range of access platforms, we are able to get to work within minutes of arriving to site, work within confined spaces such as balconies, and provide long reach access to areas that would normally be out of limits.

Wherever cradles or Building Maintenance Units (BMU's) are present as part of the structure our operatives are trained to carry out annual compliance testing and inspection, and therefore ensure that whilst carrying out High Level Cleaning, equipment in use is always compliant to latest H & S legislation.

Our High Level Cleaning Service Offers:

- **Consultancy and Advice with documented reports**
- **Rope Access, Water fed pole systems, truck mounted and cradle access techniques**
- **Minimum of two man teams work at height qualified with latest techniques to minimise disruption**

Rooflight Replacement

We have many years experience in replacing all types of roof lights from commercial and industrial buildings to flat, pitched roofs, and farm buildings.

Many buildings require a source of natural light and therefore have roof lights incorporated into the roof structure.

We can replace aged and defective roof lights to allowing natural daylight back into the building. Replacement is a consideration primarily for health & safety as aged roof lights become brittle and are a major concern when considering any form of roof access.

Our Rooflight System Offers:

- **Plan & Project manage replacement Rooflights, documented site survey report recommendation.**
- **Plan & Project manage replacement Rooflights, documented site survey report recommendation.**
- **Improve Thermal & Light Efficiency + negate potential leakage.**
- **Market Leading materials with manufacturer guarantees.**
- **Variety of applications & designs to suit every building.**



Thermal Roof Surveys

Our Thermal Roof Surveys use the latest technology in thermal imaging, to give you valuable information about your roof integrity and areas where leaks could develop, as well as locating already existing leaks.

Thermal Imaging is an extremely cost effective technique for evaluating the integrity of a wide range of roof systems and is a non-destructive type of testing. It is an invaluable resource for showing you where insulation is missing or damaged or if water is trapped under membranes, slowly creating a problem that could cost thousands.

Building owners can then make an informed decision to action any defects identified to extend the life span of the roof and also intelligently prepare for the future, preventing emergency costs that could have been avoided.

Our Thermal Roof Surveys Offer:

- **High Specification cameras with wide angles to make temperature differentials easier to identify.**
- **Same day delivery of reports to include further recommendations.**
- **Minimal disruption to property with accurate mapping of leaks, slipped insulation, damp areas + electrical problems.**





Soffit and Rainwater Goods

Heightsafe Systems replacement of aluminium soffits and rainwater goods offer a cost effective, integrated roof to eaves protection solution corrosion and weather resistant and virtually maintenance free.

Some gutters become overloaded during severe rain storms, resulting in major leaks. In most cases this problem can be resolved, by either increasing the capacity of the gutter, providing additional outlets or installing a siphonic system or simply a cyclical clean.

We can supply an extensive section range of aluminium guttering and down pipes including, half round and deep flow gutters. We can also advise on bespoke gutters, designed and manufactured in aluminium to suit your specific project needs.

At Heightsafe Systems we have experienced staff at both design and delivery level to ensure that we advise you of the best solution, and provide a quality product that meets your needs.

Our Soffit and Rainwater Goods Offer:

- **Thorough surveys include flashing, coping and expansion joints.**
- **Inspection of exterior walls rainwater goods, eaves and soffits.**
- **Written report & following repair or replacement to include a full maintenance checklist.**
- **Cyclical planned inspection contracts delivered via our client portal.**

Graffiti Removal

Heightsafe Systems offer, amongst its specialist Work at Height services, graffiti removal programmes to facades, structures and general public areas, with nationwide coverage and emergency call outs.

We will familiarise ourselves with any specific restoration guidelines, which many city's have implemented, and any areas that require special care and attention.

Whilst most graffiti is applied by spray paint, graffiti artists and vandals also use other methods, and depending on the method used and the surface it has been applied to, will determine the solution for removal and most of the market leader products are not sold on the high street and do require specialist knowledge and skill to apply safely and effectively.

Special attention is paid to personal protection when undertaking this type of work. Dependant on the graffiti, stronger solvents may need to be used, but may not always provide the most appealing results, so careful and successful product selection together with informed risk and method analysis is a priority consideration.

Heightsafe Systems utilises the latest technology in pressure washing equipment solutions and protective coatings.

Our Graffiti Removal Service Offers:

- **Environmentally friendly water soluble solutions.**
- **24 hr call out or planned clean up + protective coating applications**
- **Specialist knowledge of heritage + historic structures.**
- **Anti Vandal paints + latest technologies.**



Solar P.V. and Thermal Panels.

We offer a Solar P.V. and Thermal panel repair service and routine maintenance checks on all kinds of systems.

For people without a valid warranty we have put together a solar servicing and solar repair package. All work is carried out by our solar trained installers who are accredited and experienced, assuring you a high level of workmanship.

We can undertake all repairs and servicing to Solar PV Installations, from replacement of a single part to bespoke maintenance packages from:

Basic repairs
Solar Panel upgrades
Faulty parts replacements
Electronic solar controller reprogramming
Solar Farm maintenance



Our Solar PV & Membranes Repair Service Offers:

- Detailed cyclical maintenance, cleaning and inspections with detailed reports.
- Increase performance of solar panels by a minimum of 20% with a programme of cleaning and maintenance.
- Electrical inspections to assure panels are working to their optimum.

Roof Maintenance and Repair



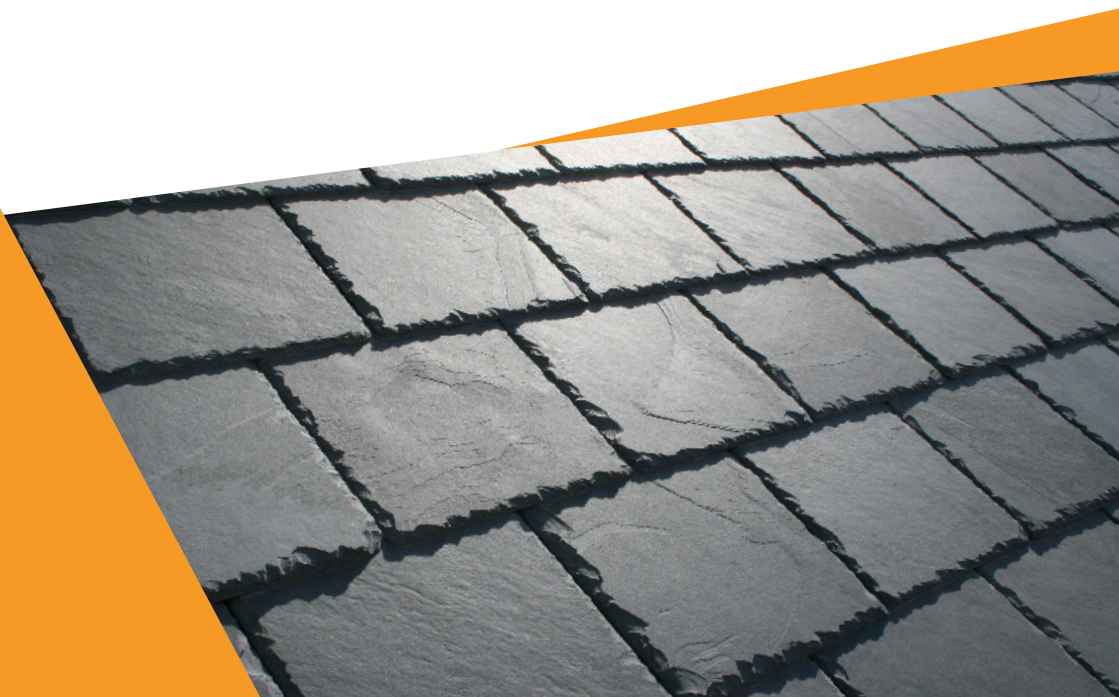
Roof Maintenance and Repair

Heightsafe have spent many years working on all roof types and have developed the knowledge and understanding of the defects in need of repair.

We operate a pro- active, on site approach, to ensure any necessary repairs or maintenance required are reported back to our clients for appropriate action.

We are able to offer the following in terms of maintenance:

- Patch repairs on all flat roof types, coverings & membranes.
- Replacement & repair of broken or damaged slates's and tiles.
- Replacement & repair of damaged cladding.
- Cut Edge Corrosion.
- Green Roof Maintenance.
- Asbestos removed.
- Lead repairs.



Training Courses



Training Contents

A low-angle photograph of a construction worker in full safety gear, including a hard hat, high-visibility vest, and safety harness, climbing a vertical steel beam. The worker is positioned in the lower right quadrant of the frame. Above them, another worker is visible on a higher level of the structure. The background shows the complex network of steel beams and girders of a building under construction. The entire image is overlaid with a semi-transparent red filter, which is darker in the bottom right corner.

64. Training with Heightsafe

65. HA1 - Height safety & Harness Appreciation

66. Eyebolt Testing and Maintenance

67. Harness Awareness

68. Work at Height Risk Assessments

69. Work at Height Rescue Training

70. CP1- Confined Space Entrant and Topman (Vertical Entry)



Training with Heightsafe

Our work at height courses will take you through the basics to the more advanced aspects of practical PPE training, ensuring you know what to do to stay safe in such a situation. After you've completed one of our training courses you'll have a recognised qualification that shows you meet all necessary industry standards.

With comprehensive work at height training you'll have far less to worry about, because although working at height will always be risky, with the right knowledge and PPE training behind you you'll have all the skills necessary to help ensure your safety. You can then rest easy knowing you're doing everything you can to ensure the safety of everyone involved. As well as the standard courses we offer, we can also deliver bespoke training courses depending on your individual site specific needs, please call our dedicated training centre for more information.

Our Instructors

Here at Heightsafe Systems, we live, breathe and thrive in the work at height industry on a daily basis. All of our instructors are fully qualified in both theory and practical aspects of the industry. Most have had a career within Heightsafe and are time served installers and testers.

Our Training Centre

Our business is rapidly expanding and growing year upon year. As well as investing in state of the art premises to house us, we've also invested in a bespoke training centre, specifically designed to cater for all aspects of work at height training, practical or classroom. Our purpose built safety systems will create the right environment to enable your staff to gain confidence to carry out their role safely and regulated.



HA1 - Height safety & Harness Appreciation

Height Safety and Harness Appreciation training is a half-day course, usually lasting between two to four hours. The course takes place in a classroom or training facility, with a maximum intake of ten delegates per class, and is recommended for all persons who may be required to control or make use of all protection systems (i.e. operatives, managers, supervisors).

The course aims to improve the attendees' awareness of the basic hazards present when working at height, as well as the correct operating and inspection procedures of harnesses, lanyards and connectors. Delegates will develop a sound knowledge of anchorage points, fall arrest blocks, and vertical and horizontal systems. They will also study all current UK legislation relevant to working at height, and be trained in hands on methods of inspecting equipment. In addition to classroom study there is also a practical portion of the course, which involves inspection awareness with hands on training.

Course Aim

The course aims to improve the attendees' awareness of the basic hazards present when working at height, as well as the correct operating and inspection procedures of harnesses, lanyards and connectors. Delegates will develop a sound knowledge of anchorage points, fall arrest blocks, and vertical and horizontal systems. They will also study all current UK legislation relevant to working at height, and be trained in hands on methods of inspecting equipment.

In addition to classroom study there is also a practical portion of the course, which involves inspection awareness with hands on training.

Course Content

- Checking and Inspecting Harness & Lanyard
- Donning of a full body harness and lanyards.
- Ability to identify any potential hazards whilst working at height
- Ability to detect any technical defects or omissions to safety line system & PPE
- The ability to recognise any implications for health and safety caused by those defects or omissions, and be able to specify a remedial action to mitigate those implications
- Health & Safety Legislation



Course Duration: Half Day



No. of Delegates: 10



Valid Certification for: 3 yrs

Harness Awareness

Harness awareness training is an absolute pivotal competency for any staff who carry out any work at height within their role.

The correct practices must be adhered to ensure care, attention and maintenance is given to what are essentially lifesaving pieces of equipment. Suitable for users new to work at height or as a refresher course for those with more industry experience.

Course Aim

A more condensed look at life saving PPE kit, the course is designed to enable the end user to select the correct harnesses and lanyards for the job at hand. Predominantly classroom based with the addition of donning & doffing PPE. Recommended for all persons who may be required to control or make use of fall protection systems

Course Content

- Introduction to Harness awareness
- Selecting the correct PPE for the job
- Hierarchy of work at height
- Different harness uses – Fall Arrest/Restraint
- Inspection
- Assessment
- Correct fitting of PPE
- Evaluation



Course Duration: Half Day



No. of Delegates: 12



Valid Certification for: 2 yrs



Work at Height Training

With H&S legislation ever increasing in the work at height industry, work at height training is a crucial competency to have. This competency must be demonstrated to prove that you and your staff are compliant and more importantly, safe. We can tailor our courses to meet your individual site requirements making the course even more applicable and relevant to you staff. Please call our training centre for more information on bespoke training.

Course Aim

The course is designed to ensure users have an understanding of the risks involved with working at height and what measures need to be taken to minimise and control these risks. It will provide them with an understanding of the roles and responsibilities with all parties involved. Basic harness/ppe awareness is also covered.

Course Content

- Introduction
- Risks involved with working at height
- H&S Safety Legislation
- Roles & Responsibilities
- Basic risk assessment
- Safe Systems of working
- Restraint/Fall Arrest
- PPE & Associated awareness
- Horizontal/Vertical Safety Systems
- Mobile safety systems
- Inspection & Care of safety systems
- Assessment
- Evaluation



Course Duration: 1 day



No. of Delegates: 10



Valid Certification for: 3 yrs



Work at Height Risk Assessments

Before any work at height is carried out, we must always provide risk assessment. A risk assessment is a systematic approach to identify hazards, evaluate risks and incorporate appropriate measures to manage and mitigate risk. Risk assessments are a critical component in the prevention of accidents. All involved need to be protected, covered and safe. This course is perfect for any managers or supervisors who have to arrange for their staff to work at height.

Course Aim

The law states that businesses must take steps to protect people 'as far as is reasonably practicable'
The aim of this course to ensure people responsible are meeting their legal duties and complying with regulations to ensure a safe, pleasant working environment.

Delegates will take away a thorough understanding of the practical application of risk assessment techniques, specifically tailored to the work at height industry.

Course Content

- An Introduction to risk assessment
- Legal requirements
- Hazards
- Risks
- Objectives of risk assessments
- The five stages of risk assessment
- Practical exercises
- Evaluation



Course Duration: 1 day



No. of Delegates: 8



Work at Height Rescue Training

An essential part of planning to work at height must include provisions for emergency and rescue scenarios in the event of a fall. Rescue is the responsibility of the employer/building owner NOT the emergency services. This specialist course covers all aspects relating to working at height and rescue. Then course is ideal for employers, managers & operatives.

Course Aim

The aim of this course is to ensure responsible people have an in depth understand of rescue procedures, why they're important and how to plan for and successfully complete a rescue. Delegates will also experience a simulated practical rescue scenario to gain practical experience.

Course Content

- Hierarchy of Controls when carrying out Work at height
- How a rescue kit works
- Harness Inspection & wearing
- Using a rescue kit at ground level
- Simulated rescue (dummy)
- Recertification, training and first aid procedures



Course Duration: Half Day



No. of Delegates: 4 Max

CP1- Confined Space Entrant and Topman (Vertical Entry)

All personnel who have to enter a medium risk confined spaces (other than a Water UK site) are suited to this course. This training is absolutely essential for operatives who work in low or medium risk confined spaces. It is a two day course (or day refresher). A mixture of awareness and practical experiences

Course Aim

The course's aim is to help attendees develop awareness and identify basic hazards that are present when working in confined spaces, as well as the correct procedures and inspection of equipment. Delegates will become familiar with the Water UK Administrative Controls for Confined Spaces, including the classification list, risk assessments, safe system of work, rescue plans and permit to work.

Delegates will be shown how to use various templates to assess risks on a dynamic basis, carry out a pre-use inspection and demonstrate an ability to correctly select and use the appropriate equipment. Delegates will also learn how to judge team sizes in the event of needing to plan more complex operations

Course Content

- Prepare to enter and work safely in low and medium risk confined spaces
- Enter and exit low and medium risk confined spaces safely
- Prepare and use appropriate escape breathing apparatus in accordance with manufacturers specification
- Use equipment and tools safely in accordance with manufacturer's instructions
- Follow procedures and work safely
- Deal with emergencies
- Put your knowledge into practice
- Apply relevant industry standards
- Prepare to ask as a top person (safety attendant) for teams working in low and medium risk confined spaces
- Oversee the safe entry to and exit from a confined space
- Monitor the work team to ensure procedures are followed

Final examination involves planning an entry, operating in the space, leaving, closing down the space and then reporting.

The delegate's ability to inspect and operate equipment will also be specifically assessed.



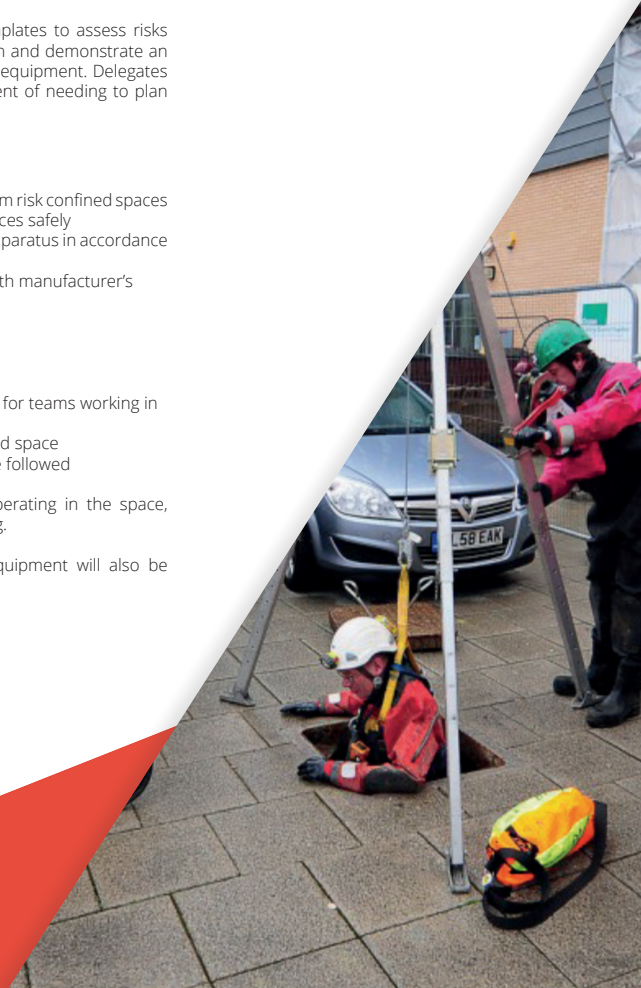
Course Duration: 2 days
(Refresher 1 day)



No. of Delegates: 8 - 10



Valid Certification for: 3 yrs





Contacts

Heightsafe Systems Ltd

Head Office:

6 Caldbeck Road
Wirral International Business Park
Bromborough
Wirral
Merseyside
CH62 3PL

Tel No: +44 (0)20 3819 7199
Fax No: +44 (0)20 3092 3234

www.heightsafesystems.com
info@heightsafesystems.com

Southern Office:

Greenhill House,
26 Greenhill Crescent,
Watford Business Park,
Watford,
WD18 8JA

Scotland Office:

Hudson House,
8 Albany Street,
Edinburgh,
EH1 3QB.



Notes





Notes





Notes



How To Contact Us

For orders, enquires or technical support please contact our customer services team on the number below.

☎ +44 (0)20 3819 7199

🖨 +44 (0)20 3092 3234

✉ info@heightsafesystems.com

🌐 www.heightsafesystems.com